

**Peggy King**

---

**From:** Best of Missouri Hands <admin@bestofmissourihands.org>  
**Sent:** Thursday, July 17, 2025 1:36 PM  
**To:** info@snowflakeglass.com  
**Subject:** BOMH INTOUCH NEWSLETTER JULY/AUGUST 2025

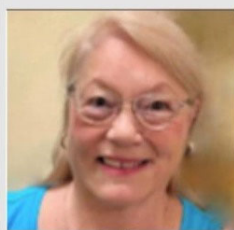
[View this email in your browser](#)



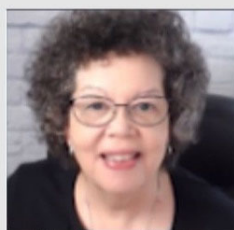
---

**INTOUCH NEWSLETTER**  
**JULY/AUGUST 2025**

# NOTES FROM THE PRESIDENT



Barb Byrne  
President



Barbara Phillips  
Vice President

2025  
2026  
BOARD  
MEMBERS



Pat Berkbigler  
Secretary



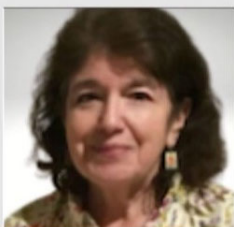
Steve Hofstetter  
Treasurer



Lisa Hilton  
Jury Chair



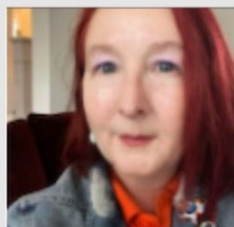
Angel Brame  
Regional Events



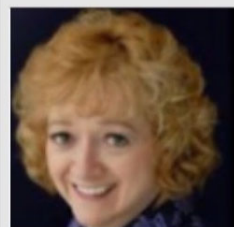
Nina Miller  
Visiting Artist



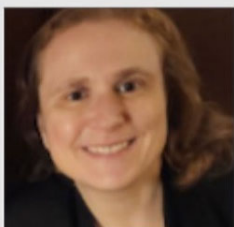
Nancy Brickner  
Membership Chair



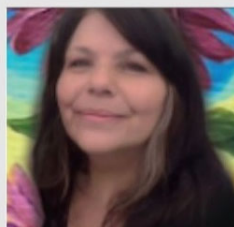
Debi Wodraska  
Grants Chair



Garnetta  
Sullivan



Christine Lohse  
Historian



Linda Passeri



Bethany  
Spaulding



I am both honored and humbled to have been elected President of BOMH for the 2025-2026 fiscal year!

Let me take this opportunity to announce the new officers who will be serving beside me:

- Vice President – Barbara C. Phillips
- Secretary – Pat Berkbigler
- Treasurer – Steve Hoftstetter

I look forward to working with these officers and all of our other dedicated board members. We share an amazing skill set among us and everyone is eager to use their skills to move our organization forward.

I plan to spend some time reaching out to the membership at large for feedback, encouragement, and volunteers. If I can give back to BOMH just a small measure of what I have been given, I will consider myself a successful President!

My best to you,

Barb Byrne

BOMH President

Juried Glass Artist

---

## MEMBER NEWS



## Crossroads Art Council

The "Words of Wisdom - Combining Thoughts with Images" gallery art show today announced the winners. It also included a reading by our two featured published authors, Jeff Jones and Melissa Burnett. Thank you to our sponsors, our judges, our curators and most of all, our artists.

Winners:

1st place: Laurie Sirtak- "Words of Wisdom, multi-media collage

2nd place: Debbie Kindschuh - "Resurrection", acrylic

3rd place: Debbie Kindschuh - "Magical Garden", acrylic

Juried BOMH Painter Debbie Kindschuh





She peeks through Nature's little shaded spot. Under a cooling leaf. She will have her art fair debut at the [2025 Glenview Summer Art Fair](#) this weekend. If you are in the area, stop by booth #57 and say "Hello"! Thank you to the [Glenview Art League](#) for this opportunity!

Juried BOMH artist [Allison L. Norfleet Bruenger Collections - Jewelry and Mixed Media](#)



I am currently participating in three exhibits:

- I have 3 pieces in the **Beyond the Canvas** - 3D Art show at 80 Santa Fe Art Gallery in Overland Park, Kansas. Exhibit runs from June 20 through August 9.
- I have 2 pieces in the **Colors of Ability** exhibit at Buttonwood Art Gallery in downtown Kansas City. Exhibit runs from July 1 through September 24.
- I have 12 pieces in the **Communications** exhibit at the UCM Art Gallery in Warrensburg, Missouri. The exhibit runs from July 9 through August 6.

Juried BOMH Glass artist Barb Byrne



# BOMH PROFESSIONAL DEVELOPMENT GRANT WINNER REPORT

---



Hi! My name is Julie Sieving I am a 2x Juror in Painting and Clay Creations with Best Of Missouri Hands. My first love for 8 years was making colorful unusual pieces out of clay. After 8 years of artistic bliss I found out I had become allergic to the clay and glazes and had to close my clay studio. I worked with acrylics and photography for a couple years and still painting some, finding it was just not same as being creative with my hands. One day I decided to try my hand at glass by taking a stained glass class. I had always loved looking at glass in the stores but never really thought that I was able to do it.

I have finally found something that really peaks my interest, I loved it, I did a couple of pieces, even mixing a couple of clay pieces that I had done and set aside and did stained glass in them. Trying to get closer to my love for clay, I had decided I wanted to see what fusing glass was all about. I had applied for the Best of Missouri Grant last year and was excited that I was one of the artist picked to receive a \$200 grant. This gave me the chance to take a couple of fused glass classes from Cheryl Vowels out of Springfield. I wanted to see if it scratched my itch, of missing clay so much. Finally found what I was looking for!

The money I got from the grant started my next artistic phase. It has been an adventure learning the art of glass. It is so different than clay. The kiln work is probably the most difficult part. With clay you put in the kiln turn it on and run it. Glass has recipes, you have to have several steps in temperature and hold times that you have to figure out. I'm learning, loving and figuring it out. Thank you Best of Missouri Hands for helping me get started in my new adventure.

\*To learn more about the BOMH Professional Development Grant, please visit <https://bestofmissourihands.org/portfolio/bomh-professional-development-grant/>

Next deadline is **February** 15, 2026, but it is never too soon to put your application in. We are now offering two \$500 Grants per year.

---

## **BOMH ON THE ROAD CALL FOR ART**

---



**On the Road with  
The Best of Missouri Hands**



**Cultural Corner Art Guild** and **The Best of Missouri Hands** are soliciting entries for an exhibition of works made by Best of Missouri Hands Members.

## CALL FOR ARTISTS

You are invited to submit up to three pieces for our upcoming exhibition at the Cultural Corner Art Guild in Chillicothe, MO. This exhibition is part of the **BOMH On The Road** series.

### STATEMENT OF PURPOSE

This exhibition was developed by The Missouri Artisans Association, d.b.a. The Best of Missouri Hands, and Cultural Corner Art Guild to provide a forum to demonstrate the creativity and diversity of the artists and artisans of Missouri. We encourage artists to submit works that exemplify Missouri's traditions of handmade arts and crafts. The theme for this exhibit is, "On The Road; The World We Create." The theme is open to individual interpretation and should be considered in the creative process.

### ELIGIBILITY

This exhibition is open to anyone with up-to-date membership in Best of Missouri Hands. Each member may enter up to three works that have been created in the last three years. Entries must be original and not previously shown at a BOMH exhibit or at Cultural Corner Art Guild. Maximum size 36 x 36 including the frame. Finished gallery wrapped canvases are acceptable. Frames need to be simple, no overly ornate frames or barn wood accepted. Maximum weight: 50 lbs. Hanging works must be wired for installation, no sawtooth or triangle hangers are allowed. Three-dimensional pieces must fit through the doorway, including frame or stand. This is a child-friendly venue and should be considered in the submission process. Commission for works sold is 70% to the artist and 30% to the gallery. All works must be for sale. No NFS will be accepted. All applications will go through [Entrythingy.com](http://Entrythingy.com).

### DELIVERY, RETURN OF WORK, AND LIABILITY

Delivery of artwork to and from the exhibit is the responsibility of the artist. Works must be labeled with artist's name, title of work, media, and price on the back of each piece. Storage cartons must be properly labeled. Work not picked up within one week of the designated timeframe will be considered abandoned and become the property of the venue. Receipt of the completed form constitutes your agreement with all conditions established in the prospectus.

Consent to reproduce works photographically, for publicity purposes, is assumed to be granted. All reasonable care will be taken with your works, but neither the venue nor Best of Missouri Hands will be responsible for theft or damage incurred at the location. We recommend artists provide their own shipping insurance coverage to cover any transit damage. Please note that shipping to the venue is not an option. A shipping option to the director will be announced as it gets closer to the exhibit dates. Return shipping will be at the cost of the artist via a prepaid label. Drop off to the venue is September 23 through September 26 from 10am to 4pm each day. No other drop off times will be available. Please consider grouping together with other artists and designating one person to make a delivery and pick up. Any deviation from procedure must go through the Regional Events Committee. Please do not contact the venue directly.

### CALENDAR

August 1	Application open on <a href="http://Entrythingy.com">Entrythingy.com</a>
August 31	<u>Application process closed</u>
Sept 23-26	Drop off at Cultural Corner Art Guild from 10am to 4pm each day
Sept 30	Exhibit Opening hours of operation: Tues-Fri 10am-4pm Sat 1pm-4pm
Nov 14	Exhibit Closes
Nov 15	<u>Show taken down-works packed for pick-up during business hours</u>

Participating artists are strongly encouraged to advertise this event. If each artist brings a few guests, the show will be a success for all. Feel welcome to post this call for artists or forward it to other artists that may be interested.

Artist Reception Friday, November 14, 2025 from 5pm-7pm. Awards will be announced at that time.

Cash prizes will be awarded during the opening reception for 1<sup>st</sup>, 2<sup>nd</sup>, 3<sup>rd</sup> places and three Honorable Mentions.

The show is open Tuesday through Friday from 10am - 4pm and Saturday from 1pm - 4pm. The exhibit is free and open to the public.

Cultural Corner Art Guild

424 Locust

PO Box 24

Chillicothe, MO 64601

(Please note that this is the physical address for delivery purposes, not for shipping purposes. A shipping address will be announced by September 10<sup>th</sup>)

Missouri Artisans Association, d.b.a. The Best of Missouri Hands

2101 W. Broadway #322

Columbia, Missouri

(866) 699-2664

[www.bestofmissourihands.org](http://www.bestofmissourihands.org)

Additional note: Do you live in this area? Interested in helping? Please reach out! We are always looking for volunteers to help in any or all of this process from unpacking work to helping during the reception. It's a great opportunity to see what goes on behind the scenes of a gallery exhibit. You can reach me at [drqnflysnmud@gmail.com](mailto:drqnflysnmud@gmail.com)!

Angel Brame

Dragonflies and Mud

[www.dragonfliesandmudpottery.com](http://www.dragonfliesandmudpottery.com)

[www.etsy.com/shop/dragonfliesandmud](http://www.etsy.com/shop/dragonfliesandmud)

417-483-8084

---

# WELCOME TO OUR NEWEST MEMBERS

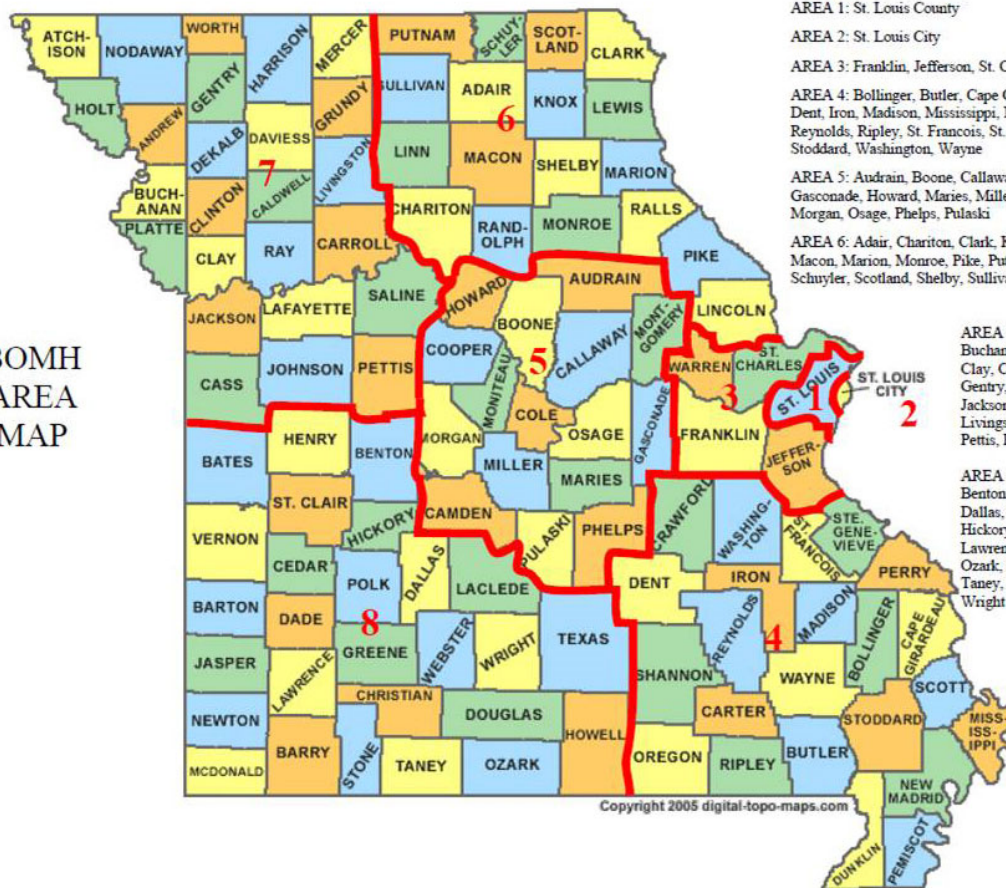
---

WELCOME....

Chris Durrill / Rag Bag Rebel Alliance

Kella Gehlert

BOMH  
AREA  
MAP



**MEMBERSHIP BREAKDOWN:** Total Members 504

168 General Members / 16 Corporate-Gallery Members / 12 Educators

8 Studio Artists / 300 Juried Members

**MEMBERSHIP BY REGION**

Region 1 - 77 Members / Region 2 - 58 Members / Region 3 - 78 Members

Region 4 - 36 Members / Region 5 - 79 Members / Region 6 - 13 Members

Region 7 - 54 Members / Region 8 - 85 Members

# SCAM ALERT



An Example of Email Phishing I received a phishing email that appeared to be from BOMH or WordPress, and I wanted to discuss two ways to spot a phishing email. Email phishing uses impersonation and deception. Phishers, often referred to as bad actors, create emails that seem to come from legitimate and trustworthy sources, such as BOMH. Their goal is to instill a sense of urgency, fear, or curiosity in the recipient, prompting them to act quickly without thinking critically by clicking on a link.

The first red flag I want to point out is impersonation in the “From” field. Phishers often use addresses that are slightly misspelled or come from a different domain than the official one (e.g., support@paypal.co instead of support@paypal.com). Please re-fer to the “From” line in the image of the example email I received. You’ll notice that the sender’s actual email address, which I’ve circled in red, has nothing to do with BOMH or WordPress.

The second warning sign to look out for is that the link in the email does not match the domains of BOMH or WordPress. Phishing emails often contain



links to fraudulent websites that are designed to appear identical to legitimate sites. These fake sites are where your credentials or personal information can be stolen. Before clicking a link, please hover your mouse over it (without clicking!) to check the actual website address (URL) it points to. If the URL does not match the legitimate domain exactly, do not click on it!

Please take another look at the image of the phishing email I received. I have circled the button link in red and have drawn a red line pointing to the actual URL that appeared at the bottom when I hovered over the 'Verify Now' link. Email phishing is a serious threat. By understanding the tactics used by these bad actors, you can significantly reduce your risk of becoming a victim. Stay informed and maintain a healthy skepticism. Your vigilance is your best defense against these deceptive schemes. And DON'T CLICK ON IT!

Juried BOMH artist Garnetta Sullivan

---

## EVENTS

## WORKSHOPS

## CALLS FOR ART

---

# Christmas in



Come join ASL Pewter for the party! We are celebrating Christmas in July!

From July 18 through July 27 we will have sales and in-store specials. We are open 9:30 to 5:00 every day, and extra late on Friday, July 18 for Moonlight Madness and Friday, July 25 for ArtWalk. Get a head start on your Christmas shopping. And beat the heat in our air conditioned shop. See you soon!

Juried BOMH Studio Artists ASL Pewter



Y'all! The [Plume Fused Glass Workshop](#) SOLD OUT so [Plume](#) scheduled a 2nd workshop!!!

The 2nd Fused Glass Workshop is on Saturday August 9th from 1:00 PM - 2:30 PM and I would love to see you! Just click on [Plume Fused Glass Workshop](#) and you will find the link to sign up!

Remember, I'll bring the glass and you bring the creative energy!



**CREVE COEUR  
PLEIN AIR  
— ART EVENT —**

**AWARDS**

**BEST IN SHOW • \$750**

**FIRST RUNNER UP • \$500**

**HONORABLE MENTION • \$250**

**100% of sales go  
directly to artists!**

**Artist Registration: [www.crevecoeurmo.gov/PleinAir](http://www.crevecoeurmo.gov/PleinAir)**

## PLEIN AIR ART EVENT

The Creve Coeur Arts Committee is proud to host its 2<sup>nd</sup> Annual Plein Air Art Event from September 6 through September 11, 2025. Participating artists will set up their easels outside and paint the beautiful landscapes of Creve Coeur!

The event will conclude on Thursday, September 11, with a display of all the submitted paintings during an evening reception in the historic Tappmeyer Homestead, located in Millennium Park (2 Barnes West Dr., Creve Coeur, MO 63141). The reception will be open to the public from 5:00-7:30 p.m. The community is invited to view the submitted paintings—many of which will be available for purchase, with 100% of sales going directly to the artists.

The reception will coincide with the final summer concert of the season in Millennium Park from 6:00-8:00 p.m. Bring your lawn chair and enjoy your favorite hits from the '70s and '80s performed by the Jason Nelson Band. Kiwanis will have barbecue, chips and soda for sale.

Learn more here...<https://www.crevecoeurmo.gov/1217/Plein-Air-Art-Event>

---

## NEWS FROM MISSOURI LIFE MAGAZINE

---



# MissouriLife

M A G A Z I N E

Your complimentary  
issue of Missouri Life  
is here!



As a Best of Missouri Hands member, you receive a complimentary digital subscription to Missouri Life magazine! In our July/August edition, we're exploring the St. Louis Courthouse, our history of river piracy, and riding the rails across the state!

## NEW BOMH MEMBER BENEFIT

Starting with the July/August issue of Missouri Life magazine, all BOMH members were gifted an on-going free digital edition subscription to Missouri Life. The digital edition is an exact replica of the print issue, but with these features:

- user-friendly readers. The digital edition can be easily accessed by web browser, tablet, or mobile device and fully responsive to whatever format users access it from.
- Read-aloud (or text-to-speech) and font sizing controls, which meets the highest accessibility standards.

You have received an email to opt in to the Missouri Life Magazine Digital Edition. Of course, you can cancel at any time, with 30-days notice (to give MLM time to implement cancellation.)

View your copy here featuring our first artist, Wanda Tyner...[Digital Issue](#)

## **Wanda Tyner**

## **Missouri Life Spotlight**

## Collector to Creator

One woman's love for glass turned into an artistic pursuit.

STORY Sandy Selby



Wanda is a juried member of The Best of Missouri Hands, a 500-member nonprofit dedicated to developing and recognizing Missouri artists and artisans.



"Interaction,  
Education, &  
Encouragement"  
BestOf  
MissouriHands.org

Wanda Tyner's artistic journey began with her admiration of glass art. She and her husband collected glass art for their home, and that interest inspired her to take a glass art class, simply to learn how the art she loved was created.

"I signed up for a beginning class thinking, 'I will understand more and then move on.' Instead, I fell in love with glass in a whole new way," she recalls. "I took all the local classes I could find. I also traveled to take classes with glass artists that I admired."

The next step was to purchase a kiln and to figure out all the technical aspects of preparing, programming, and firing glass.

Wanda's work today is a complex merger of texture, shape, and color, but she started off with simple forms like platters. As her skills evolved, so did her art. Now she is a master at manipulating glass into wall art, sculptures, vases, and uniquely shaped bowls. "I continue to experiment and evolve my art, keeping it interesting," Wanda says.

At her in-home art studio at Lee's Summit, her process begins with clear glass or solid-colored glass made by a manufacturer. "I manipulate the glass at high temperatures to create glass with interesting patterns, swirls, and designs," she says. "The glass is then cut and combined together to achieve the colors and designs I need. I fire this glass multiple times in

Wanda makes everything from jewelry and bowls to wall art and sculptures.

the kiln at various temperatures to achieve smooth and textured results to make various artworks."

The inspiration for Wanda's designs comes from the things that interest her most: nature, travel, and music. "I love kayaking, hiking, exploring our world, and spending time in nature. Nature is the most amazing artist and such an inspiration. I also started taking piano lessons a few years ago. Music speaks to most of us in different ways, and that inspired me to make music-related sculptures, including music notes, guitars, saxophones, flutes, and pianos."

Wanda's advice for budding artists is this: "Share your work when you are excited about it for the joy of sharing it. Don't be your worst critic. It's easy to focus on imperfections or compare to others. Don't! Join Best of Missouri Hands and a local art organization for networking and learning. Art is joy."

Purchase Wanda's artwork at [WandaTynerGlass.com](http://WandaTynerGlass.com) or at Missouri Life Mercantile in Rocheport.

WANDA TYNER

## HOW TO APPLY

# FULL PAGE ARTIST FEATURE IN MISSOURI LIFE MAGAZINE

Missouri Life is pleased to run "sponsored content" in the form of a story on a juried member on one page in every issue. BOMH will cover all fees for this artist spotlight and have committed to doing this for eight issues. Missouri Life magazine is published **eight times a year**, with issues appearing in January/February, March/April, May, June, July/August, September, October, and November/December. This results in a mix of monthly and bimonthly publications

To submit your name for consideration you must be a juried member of the BOMH. As well as...

1. Have an updated BOMH juried member page.... a detailed bio, image of you the artist, and at least 10 images of your work.
2. A BUSINESS page on Social Media, Facebook or Instagram. Other platforms are also accepted...TikTok, YouTube, if promoting your artwork. Provide a link(s) to your business page(s).
3. You must be active on your Social Media platform.
4. Include a list of ways or places that you sell your art. Website, galleries, retail shops, art shows, exhibits....

Send information to [admin@bestofmissourihands.org](mailto:admin@bestofmissourihands.org)

Please put BOMH: Missouri Life in the subject line. Artists meeting the criteria will be forwarded to Missouri Life for final vetting. Selected artists will be interviewed by a writer from Missouri Life by phone or zoom. Artist will be asked to provide an image of themselves and a couple images of their artwork for use in the one page feature.



This is an excellent reason to log in and update your juried member pages if you haven't done so in a while. Must have pic of yourself, bio/statement, and several images of your art. The more informative your juried member page is, the better.

---

## **MISSOURI LIFE MERCANTILE**

The Missouri Life Magazine has a Mercantile located in its offices in Rocheport, MO. Here you can find many pieces by BOMH artists. The Mercantile is now buying Missouri made art and products wholesale. Any members who offers wholesale prices and would like to sell at the Mercantile, you should can email inquiries to Missouri Life.

[info@missourilife.com](mailto:info@missourilife.com)

Visit the Mercantile shop online... <https://missouri-life-mercantile.square.site>

---



**ATTENTION BOMH MEMBERS....**Missouri Life Magazine wants to make sure we are familiar with this opportunity for Missouri artists and crafters. Missouri Life Magazine has partnered with BuyMO to feature four to six participants in the program from around the state, in each edition of the magazine. They balance that out by region of the state and type of products. Most features are very limited, but one BUY MO member is always a two-page feature.

Here's what you need to know...

About the Buy Missouri Program

The Office of Lieutenant Governor created the Buy Missouri economic development initiative to actively promote the products that are grown, manufactured, processed, and/or made in Missouri.

The Buy Missouri program is also intended to promote tourism, business, and economic development through showcasing and promoting Missouri-made products and businesses. The more we support and buy Missouri products, the better our entire state will do. Missouri has hundreds of products made within our borders.

Our goal is to identify and compile these products so all Missourians, as well as the Nation will know about them. The Buy Missouri program currently has over 650 members, and that number is increasing all the time!

Sign Up Here...

<https://buymissouri.net/sign-up/>

---

## VISITING ARTIST PROGRAM

---

Best of Missouri Hands asks our juried artists to participate in this program, either by finding a school or by answering a request. We hope to reach students all over the state, so we need the help of artists from all regions. Best of Missouri Hands uses money from our Missouri Arts Council grant to provide a \$100 stipend to the artist. If the artist supplies materials for a project, the artist will be reimbursed up to an additional \$100.

Contact:

Visiting Artists Program Chair Nina Miller

[nina-miller@att.net](mailto:nina-miller@att.net)

[visitingartist@bestofmissourihands.org](mailto:visitingartist@bestofmissourihands.org)

Phone: 618-978-9773



## Cynthia Borum

### YouTube Spotlight

Thank you to Missouri Artists on Main Art Gallery for allowing us to shoot this video in the gallery. For Information about Best of Missouri Hands visit our website:

[BestofMissouriHands.org](http://BestofMissouriHands.org)

Best of Missouri Hands Juried Artists are eligible to participate in events specifically for juried members. They are provided an individual page on our website, and wear our juried member badge at art shows and other events. They use juried member stickers on their items and display the juried member banner in their show booths. Since part of our mission is education, we ask juried members to participate in educational endeavors, both for the public and for other members. They are paid a stipend for their participation. Our primary educational program is the Visiting Artist Presentation.



This program traditionally sends juried artists into schools or senior centers for presentations. When in-person visits aren't feasible, we can arrange for Zoom presentations. Artists show samples of their work and talk about their process. The artist will demonstrate a skill or technique used in creating their art, and sometimes bring a project for the participants to complete. They talk about how they decided to become an artist, the training involved, what it's like, and how they sell their work. The length of the talk is usually one hour. This interview provides an example of an artist presentation.

For more information about Cynthia Borum, please visit her Instagram page where her handle is [@Cynthia\\_Borum\\_Art](#)

View Nina Miller's Interview with Cynthia Borum on the BOMH YouTube Channel. [YOUTUBE](#)

This presentation is a part of the Best of Missouri Hands (BOMH) Professional Development series.

Submitted by Nina Miller

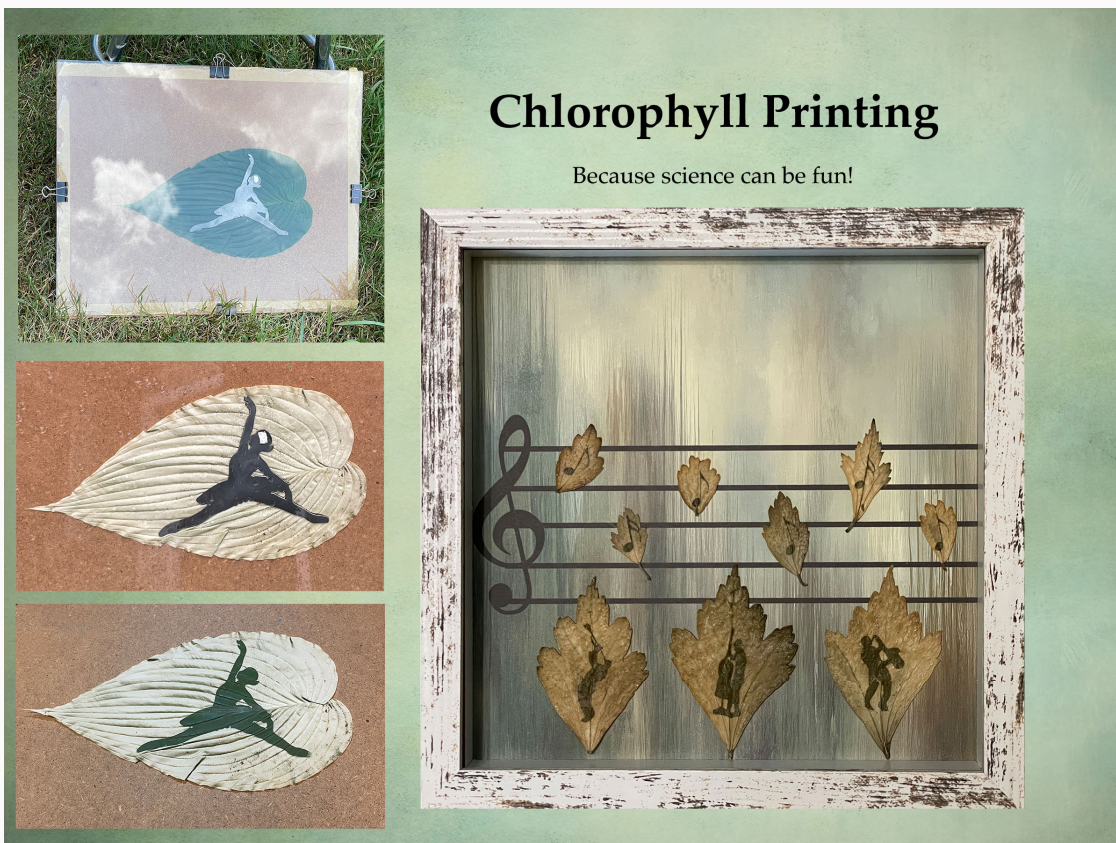
---

**PROFESSIONAL DEVELOPMENT**

**ZOOM WORKSHOP**

**August 19, 2025**

**10:00 AM**



## Chlorophyll Printing

Because science can be fun!

### UPCOMING BOMH

### PROFESSIONAL DEVELOPMENT WORKSHOPS

**August 19, 2025:** Chlorophyll Printing with Carol Estes

**September To Be Determined**

### ALL PROFESSIONAL DEVELOPMENT WORKSHOPS CAN BE ACCESSED BY...

Joining Zoom Meeting

<https://us02web.zoom.us/j/89953420893?pwd=iU4ZvchWy2If905FUVPiYDRWHSJwhy.1>

Meeting ID: 899 5342 0893

Passcode: 178722

Most workshops are the 2nd Tuesday of each month at 10:00 am. However the August workshop is on the 3rd Tuesday.

\*Workshops are recorded and published on the [BOMH YouTube Channel](#) within 48 hours of live event.

---

## JULY'S WORKSHOP NOW ON YOUTUBE



Catch the replay of July's Professional Development Workshop "The Ins & Outs of AI for Artist" with Barbara Phillips.

Barbara has been using AI to some degree or another in her business as a Nurse Practitioner and now as a photographer. She will walk us through the Ins & Outs of AI and how it can be used ethically by artist to help with organization, creating artwork titles, polishing an artist statement and so much more. The AI topic is such a buzz right now and is touching everyone's life, like it or not.

The future of AI is bright and can be used in ways to help with your workload but keeps you in the drivers seat as the artist without muddying the lines.

Barbara is a juried BOMH Photographer and a Nurse Practitioner who utilizes AI to assist her with her work flow. You can find her photography on Instagram and Facebook under Quiet Imagery.

Watch the [YOUTUBE VIDEO HERE](#).

---

# **BOMH MONTHLY ARTIST TALK**

# **FIRST TUESDAYS OF THE MONTH**

# **10:00 AM**

---

On the first Tuesday of each month at 10:00 am, the BOMH has a Zoom Meet Up for any and all members who just want to chit/chat about everything and anything. Join in on the conversation, everyone is welcome.



## **2025**

Tuesday each month at 10:00 am

The link, meeting ID, and Passcode are the same every month for the Encouragement/Friendship Group Meetings.

Join Zoom Meeting

<https://us02web.zoom.us/j/83830785340?pwd=WGQ3NDN3OCtMb1dpMmpudmhhRVhCZz09>

Meeting ID: 838 3078 5340

Passcode: 306651

Additional dates for 2025: June 3rd, July 1st, August 5th, September 2nd, October 7th, November 4th, December 2nd.

---

# **BOMH YOUTUBE CHANNEL**

---



## Best of Missouri Hands

@bestofmissourihands9891 · 104 subscribers · 44 videos

Missouri Artisans Association d.b.a. The Best of Missouri Hands (BOMH) is a state wide ...more

Customize channel

Manage videos

Home Videos Playlists Community

Latest

Popular

Oldest



Navigating the Wild-Wild-West of Publishing with Cathy Davis

3 views · 1 day ago



A look back on the history of the Best of Missouri Hands with Mike...

61 views · 1 month ago



BOMH "How to Put Together a Home Show/Studio Sale with...

27 views · 2 months ago



BEST OF MISSOURI HANDS PROFESSIONAL DEVELOPMENT...

15 views · 3 months ago



"The Joy and Challenge of Combining Mediums with Nela...

53 views · 4 months ago



Best of Missouri Hands Artist Interview Maggie Lowe by Nina...

56 views · 5 months ago



Best of Missouri Hands presents: Prepping for Art Shows

27 views · 6 months ago



BOMH CYANOTYPE PRINTING WORKSHOP with Annie Webster...

20 views · 7 months ago

## BOMH YOUTUBE CHANNEL

You can catch up on past recordings from the Best of Missouri Hands Professional Development workshops.

Watch them here...

[BOMH YOUTUBE CHANNEL](#)

# WAYS TO SUPPORT BOMH

# NEW BOMH GEAR

*Embroidered Logo*

*Polo: \$25.00*



*T-Shirt: \$17.00*

*Cap: \$15.00*



Get Yours at the BOMH Store at  
<https://bestofmissourihands.org/shop/>



Get your very own BOMH Porcelain Mug as well as Juried Member stickers, banners & signs at <https://bestofmissourihands.org/shop/>

---

**THANK YOU TO OUR  
CORPORATE & GALLERY MEMBERS  
AND  
THE MISSOURI ARTS COUNCIL**

---



## Corporate/ Gallery Members

Andrea Quiroz Jira

[www.JiraCollection.com](http://www.JiraCollection.com)

Art Impressions Gallery & Framing

[www.ArtImpressions.net](http://www.ArtImpressions.net)

Artisans Collectives Stl

[www.artisanscollectivestl.com](http://www.artisanscollectivestl.com)

Artisans In THE LOOP

[www.artisansintheloop.com](http://www.artisansintheloop.com)

Bluestem Missouri

Crafts [www.bluestemcrafts.com](http://www.bluestemcrafts.com)

Broken and Renewed Glass Art

[www.brokenandrenewedglassart.com](http://www.brokenandrenewedglassart.com)

Columbia Art

League [www.columbiaartleague.org](http://www.columbiaartleague.org)

Elkhorn Silver LLC

[www.elkhornsilver.com](http://www.elkhornsilver.com)

Green Door Art Gallery

[www.greendoorartgallery.com](http://www.greendoorartgallery.com)

Hallmark Auctions

## Corporate/Gallery Memberships are only \$100/ year

Here are a few of the benefits for those who help support our mission by becoming a Corporate or Gallery Member with the BOMH. The annual fee is just \$100 per year. Besides the list below, you will also get preferred promotion on our Facebook page which currently has 3,600+ followers! Also, Membership in BOMH Members Only Facebook Page.

- Included with all Corporate Members on Corporate Members page of BOMH website.
- Listed on BOMH email Newsletter with hyperlink to your website.
- Opportunity to sponsor events at ArtSmart Conference and Annual Membership Meeting.
- Ability to have your events publicized in periodic BOMH member emails free of charge (within policy guidelines).

For additional information please contact us at or join online at [www.bestofmissourihands.org](http://www.bestofmissourihands.org) and click on the Memberships link.

mabel be Gallery

<https://bethcoulterart.com/gallery/>

MACAA - Missouri Association of  
Community Arts Agencies

<https://macaa.net>

Manchester Arts

[www.manchestermo.gov/arts](http://www.manchestermo.gov/arts)

Mid Missouri Art

Alliance [www.midmissouriartsalliance.com](http://www.midmissouriartsalliance.com)

Missouri Artists on Main

<https://maomgallery.com/>

Missouri Life Magazine

LLC [www.missourilife.com](http://www.missourilife.com)

Sullivan Creative

[www.SullivanCreative.net](http://www.SullivanCreative.net)

SW MO Art & Craft Guild

[www.artcraftguild.org](http://www.artcraftguild.org)

Waverly House [www.waverlyhouse.com](http://www.waverlyhouse.com)

---

## Missouri Arts Council

Thank you to the Missouri Arts Council for their continuous support. The Missouri Arts Council supports the arts that strengthen the cultural, educational, and economic vitality of our state.

<https://www.missouriartscouncil.org/>



---

BOMH would also like to thank these supporting agencies, [Missouri Association of Community Arts Agencies](#) and the [Volunteer Lawyers and Accountants for the Arts](#).



**PLEASE ALSO SUPPORT  
OUR ARTSMART 2025  
SPONSORS**

---

# BEST OF MISSOURI HANDS

Thanks you for your  
Sponsorship of ArtSmart 2025



Missouri Arts Council

The State of the Arts



COLUMBIA  
WHAT YOU UNEXPECTED

**BLICK**  
art materials  
[www.DickBlick.com](http://www.DickBlick.com)



Gail and Don Crozier



*MissouriLife*  
THE SPIRIT OF DISCOVERY

**Snow Flake Glass.com**  
"No Two Are Alike"

Be Sure to Follow The Best of Missouri Hands  
on Facebook, Instagram and YouTube





---

*Copyright (C) \*2024 Missouri Artisans Association / Best of Missouri Hands  
All rights reserved.*

*Missouri Artisans Association / Best of Missouri Hands  
2101 West Broadway, #322  
Columbia, MO 65203  
[admin@bestofmissourihands.org](mailto:admin@bestofmissourihands.org)*

Want to change how you receive these emails?  
You can [update your preferences](#) or [unsubscribe](#)

